

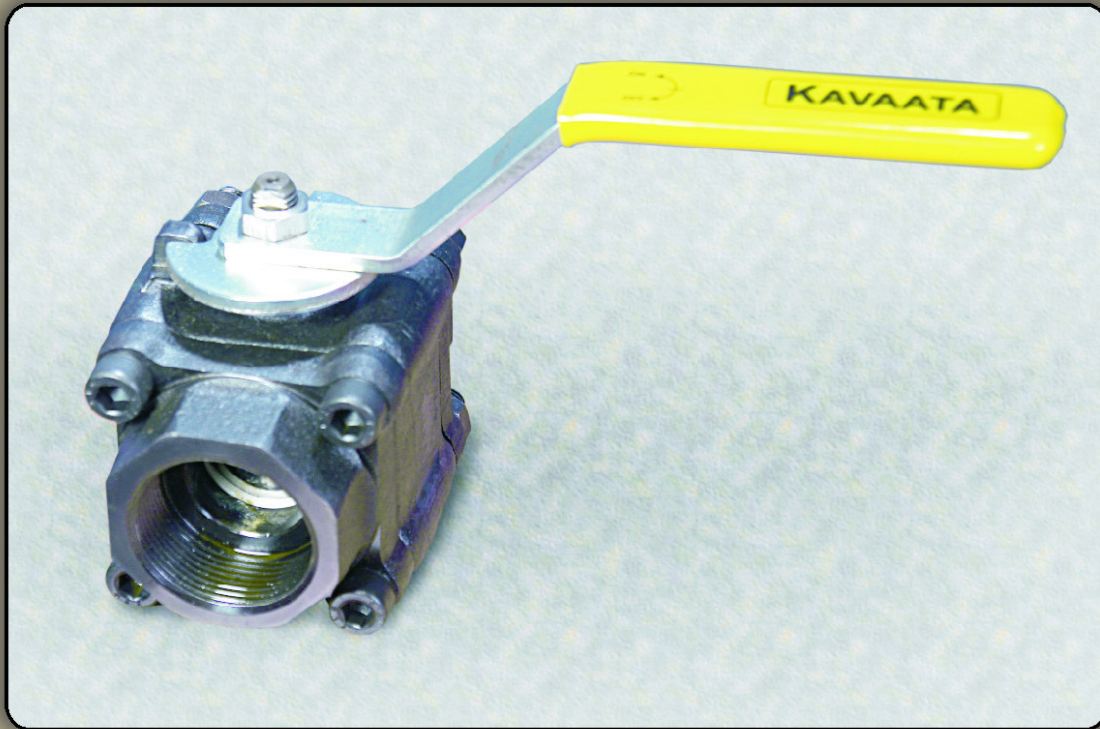
KAVAATA



VALVES



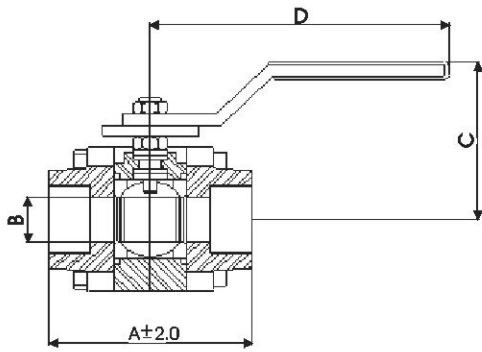
FORGED SCREWED



- ✓ MOST ECONOMICAL VALVE IN ITS CLASS
- ✓ RUGGED CONSTRUCTION
- ✓ HIGHLY DURABLE
- ✓ SPARES EASILY AVAILABLE AND INTERCHANGEABLE
- ✓ DESIGN CONFORMS TO BS5351 STANDARDS
- ✓ EASY TO OPERATE
- ✓ EASY TO MOUNT

KAVAATA VALVES

...from excellence to perfection



| SIZE | 15FB | 20RB | 25RB | 40RB | 50RB |
|----------|--------|--------|--------|--------|--------|
| A | 72.00 | 72.00 | 91.00 | 118.50 | 127.00 |
| B | 13.00 | 13.00 | 20.00 | 32.00 | 38.10 |
| C | 76.00 | 76.00 | 84.00 | 102.50 | 107.00 |
| D | 170.00 | 170.00 | 170.00 | 198.00 | 198.00 |

All Dimensions in mm

| Test Pressure | Hydrostatic | Pneumatic |
|---------------|-------------|-----------|
| SHELL | 77 kg/sq.cm | ----- |
| SEAT | 20 kg/sq.cm | 80 PSI |

| Part Name | Material |
|----------------------|--------------|
| Body | ASTMA-105 |
| Adapter | ASTMA-105 |
| Ball | SS316 / CF8M |
| Stem | SS316 |
| Nut | SS304 |
| Bolt | CS/ASTM B7 |
| Nut | CS/ASTM 2H |
| Seat | PTFE / GFT |
| Seal | GFT |
| Stem Seat | PTFE / GFT |
| Lever, Locker | CS |

| Valve Standards | |
|-------------------------|--------------------------------|
| Pressure Rating | 800# |
| Design | BS5351 |
| Testing Standard | BS6755 |
| Screwed Ends | BSP, BSPT or NPT Female Thread |



FEATURES OF KAVAATA BALL VALVES BALLS

- ✓ SURFACE FINISH HIGHER THAN 0.1μ
- ✓ SPHERICALNESS WITHIN 0.02mm
- ✓ SLOT CENTRE WITHIN 0.05mm
- ✓ END RADIUS MADE ON CNC
- ✓ SLOT WIDTH WITHIN 0.05mm
- ✓ BALL SIZE WITHIN 0.05mm

All the features of balls mentioned above contribute to the key attributes of Kavaata Ball Valves viz :

- **Higher Seat Life**
- **Bubble Tight Shut Off**
- **Low Torque**

Note : Due to continuous improvements, the specifications are subject to change without notice.

Manufactured by :

RAJEEV AND COMPANY

(ISO 9001-2000 Company)

423, Nazar Camp Cross 3, Main Road, Vadgaon, Belgaum-590 005.

Ph : 0831-2482327, 2484635 Fax : 0831-2481752

Email : sales@kavaatavalves.com

website : www.kavaatavalves.com



DEALER :

Distributed by:



Engenharia

Av. Das Américas , 14600 – bloco 01 – sala 309 – Recreio das Bandeirantes
Rio de Janeiro – RJ – Cep: 22790-702 Tel: (21) 99333-3043
Email: contato@ultrafluxo.com.br Site: http://www.ultrafluxo.com.br